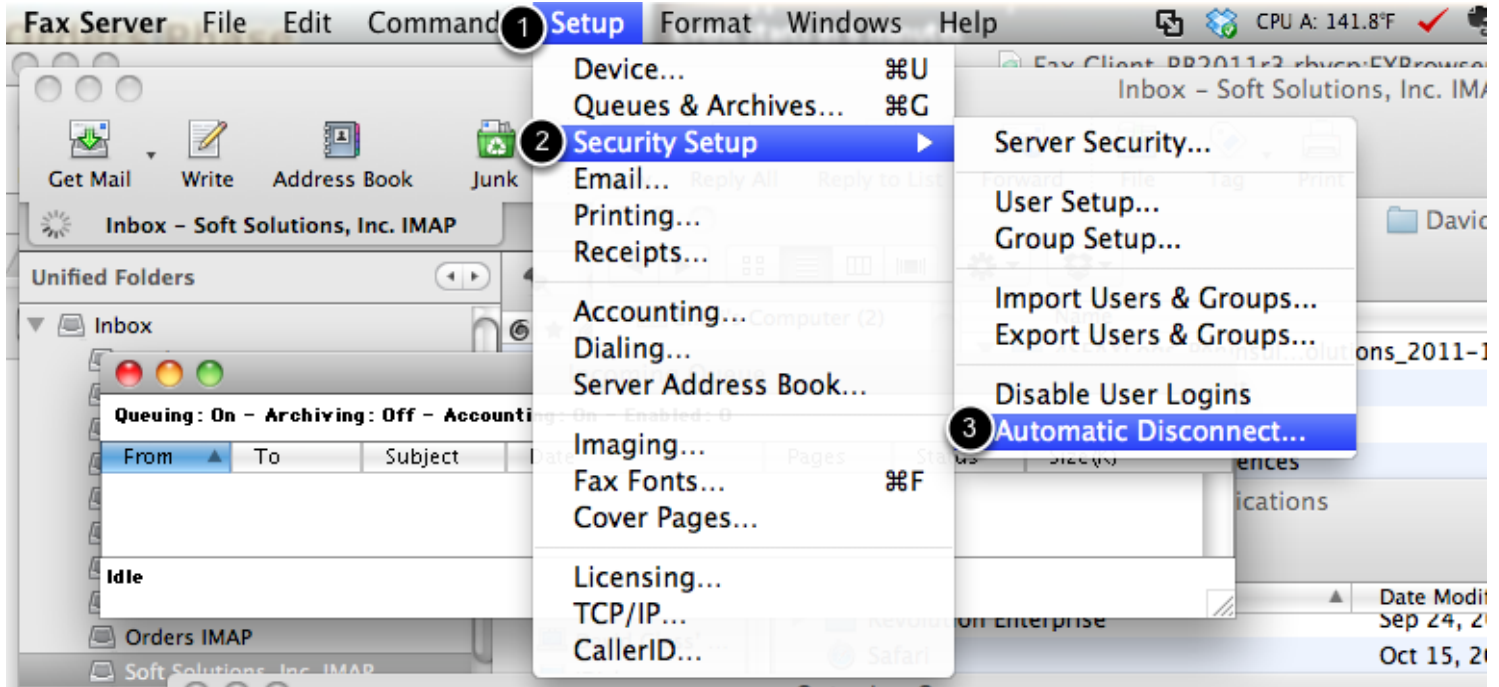


## Configure the Account Auto-Disconnect

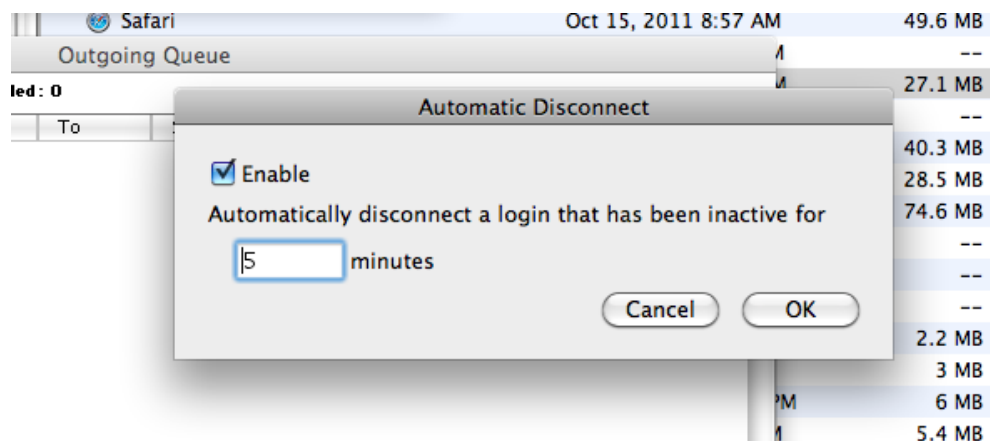
4-Sight Fax Server can be configured to automatically disconnect idle user accounts. This lesson explains how to configure this setting.

### Open the Auto-Disconnect window



From the **Setup** (1) menu, select **Security Setup** (2), and then **Automatic Disconnect...** (3) to open the configuration window.

### Configure Automatic Disconnect



To enable the Automatic Disconnect, ensure the **Enable** checkbox is checked, and set the disconnect time in the **minutes** field. Click the **OK** button to apply any changes, and close the window.